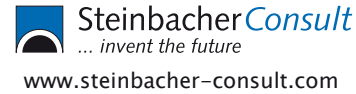
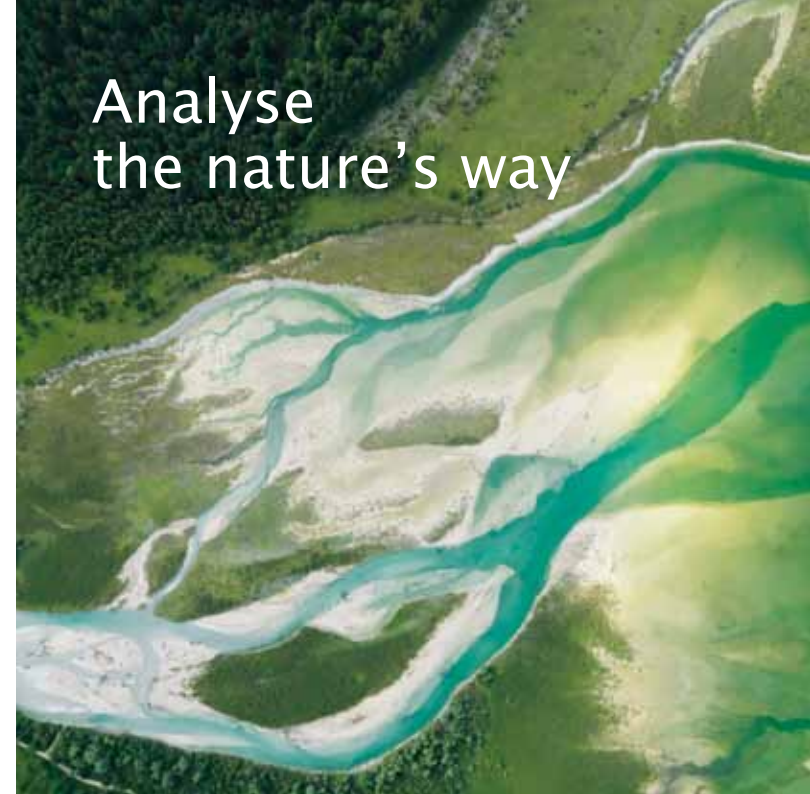


Monitoring groundwater flow

Partners



Analyse
the nature's way



Multiple ways to care
about our nature!

GreenSurvey™ covers economic
and ecologic aspects of capturing
and analysing spatial data for
environmental needs.

AirborneHydroMapping OG

Technikerstraße 21a - A-6020 Innsbruck

+43 (0)512 - 507 378 00

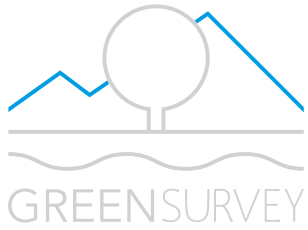
+43 (0)512 - 507 378 99

info@ahm.co.at

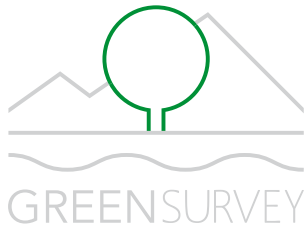
www.ahm.co.at

KIGG GmbH, Augeburg

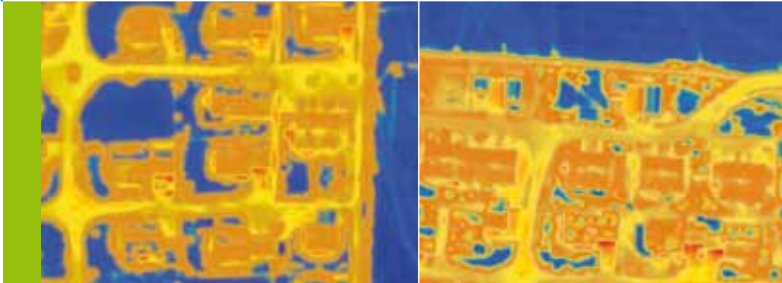




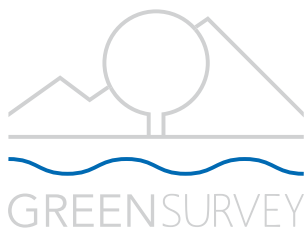
e. g. detecting and analysing the vitality of Alpine forests



e. g. detecting and analysing the reed development in Bavarian lakes



e. g. detecting and analysing the thermal loss in resident areas



e. g. detecting and analysing the sediment accumulation in estuaries

GreenSurvey guarantees the most ecologic way to perform airborne survey work. GreenSurvey is a registered trademark, and right now we are performing using the Eco-Management and Audit Scheme EMAS. Data capturing is only one side – the other side, the green one, is within your data!

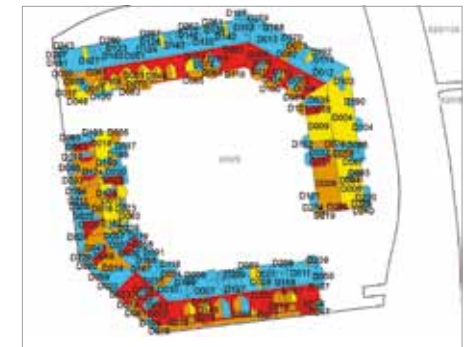


Green during survey ...

- fast data acquisition
- low carbon footprint
- silent operation
- no access to ecologically protected areas
- no disturbance of animals
- no contact to ground or water bodies

... for green results

- monitoring
- documentation
- water body related topics:
 - morphology
 - sediment transport
 - habitat modelling
 - limnological research
 - water plant analysis
- renewable energy topics:
 - thermal isolation of resident areas
 - solar power potentials
 - hydro power resources and influences
 - biomass estimations



Solar potential surveys

