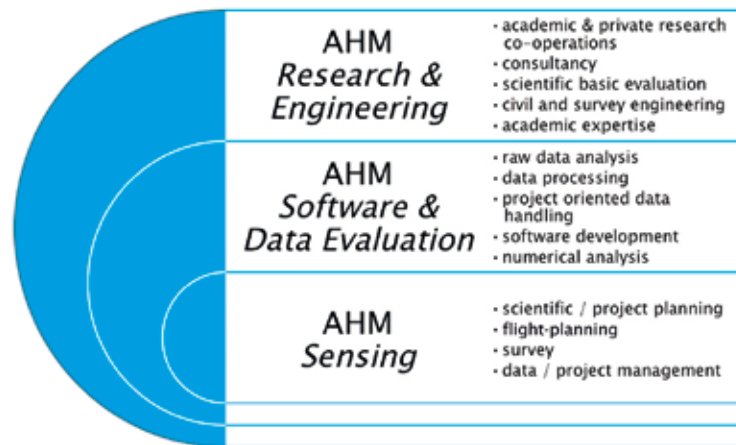


AHM – AirborneMapping

AHM is your cooperation partner for high-level spatial data capturing and analysis. We focused on customer dedicated analysis and development of soft- and hardware solutions, mainly covering the fields of environmental needs and their further processing.

Professions



Project work – HydroMapping

Sensing:

- shoreline of Lake Constance (80 km bathymetric survey)
- riverbeds of the rivers Isar, Lech and Wertach (>500 km bathymetric survey)
- combined bathymetric survey and echosounder project river Rhine (hydropower projects)

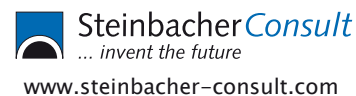
Software & Data Evaluation:

- HydroVISH: software for the combined analysis and processing of topographic and bathymetric lidar and multisensor data
- numerical analysis for hydraulic and sediment transport purposes based on hydromapping laserscan data
- habitat modelling based on hydromapping data

Research & Engineering:

- automatic hydraulic roughness detection based on point cloud distribution of hydromapping and landmapping data
- comparison of classic hydraulic models to new hydraulic models build up on hydromapping data
- using the technology of hydromapping for turbidity detection

Partners



AirborneHydroMapping OG

Technikerstraße 21a – A-6020 Innsbruck

+43 (0)512 – 507 378 00

+43 (0)512 – 507 378 99

info@ahm.co.at

www.ahm.co.at

NO
– it's not foresight,
we just have a
different point of view!

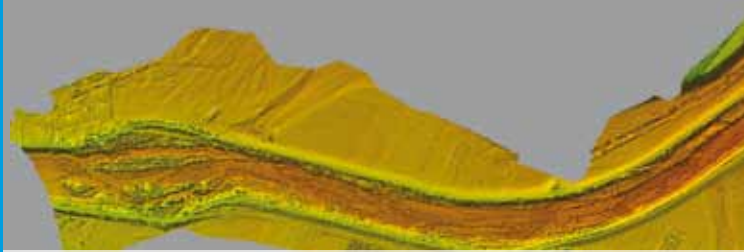
AirborneMapping –
Spatial concepts for environmental needs!

KIGG GmbH, Augsburg

AHM
AIRBORNE
MAPPING

AHM
AIRBORNE
MAPPING

AM
AIRBORNE
HYDRO
MAPPING



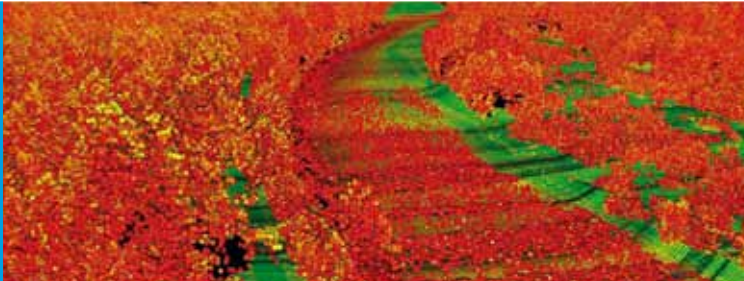
HydroMapping – shallow water bathymetry | river Isar, numerical mesh

AM
AIRBORNE
LAND
MAPPING



LandMapping – high resolution airborne and terrestrial laserscans | aerial line, vectorized

AM
AIRBORNE
NATURE
MAPPING



NatureMapping – aerial pictures, aerial spectral pictures and airborne laserscan for nature oriented analysis | determination of pointcloud distribution for automatic roughness detection

AM
AIRBORNE
ICE&SNOW
MAPPING



Ice&SnowMapping – laser induced glacier survey to asses carbon contribution, surface detection | Rotmoosferner glacier

Operating platforms



Tecnam P2006T



Eurocopter AS350



- homebases Innsbruck (LOWI) | Augsburg (EDMA)
- multisensor layout (batymetric/topographic scanner, aerial camera, spectral cameras, IR camera)
- all sensors operated within aircraft or helipod
- most economic and most ecologic survey platform